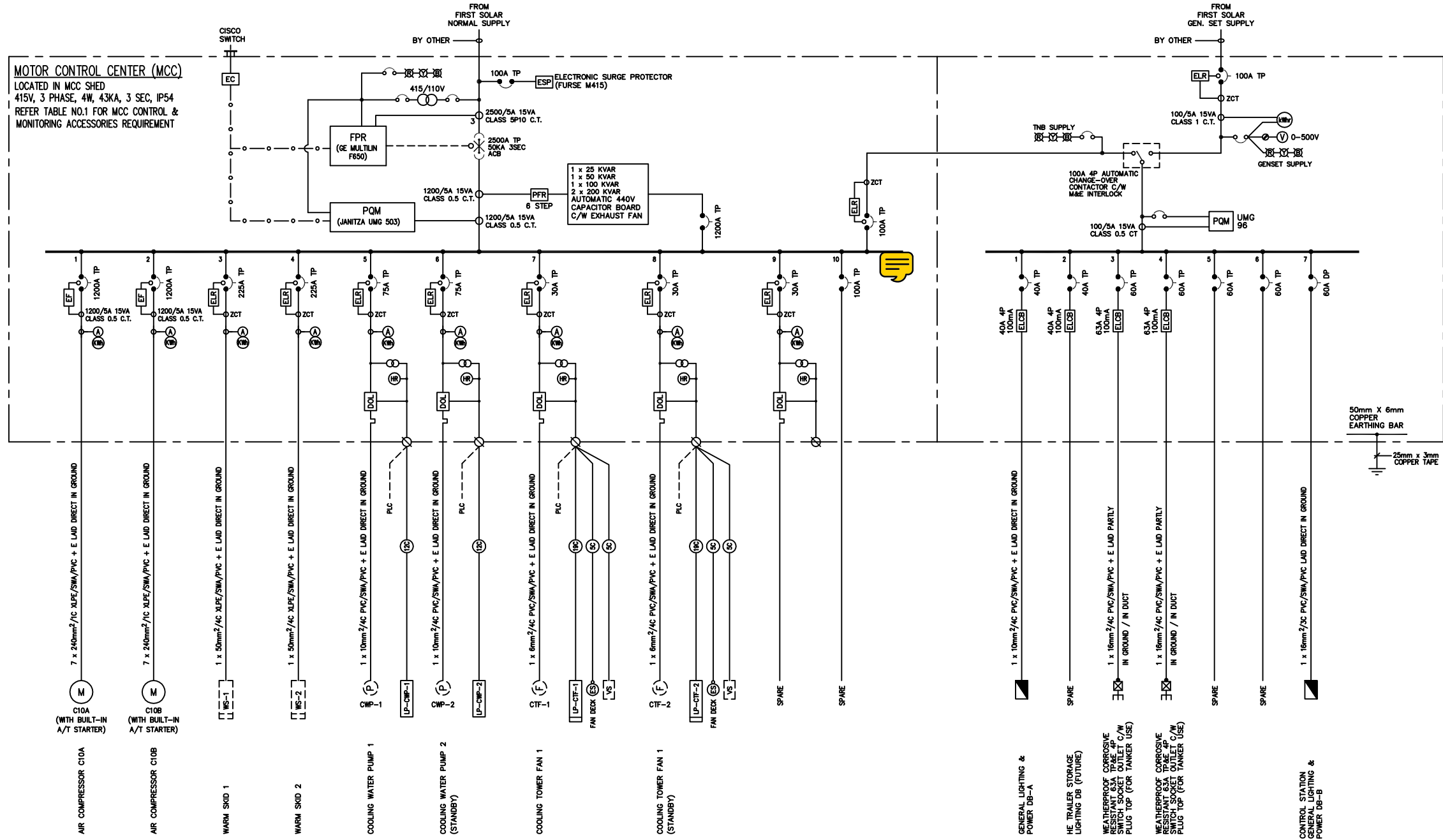
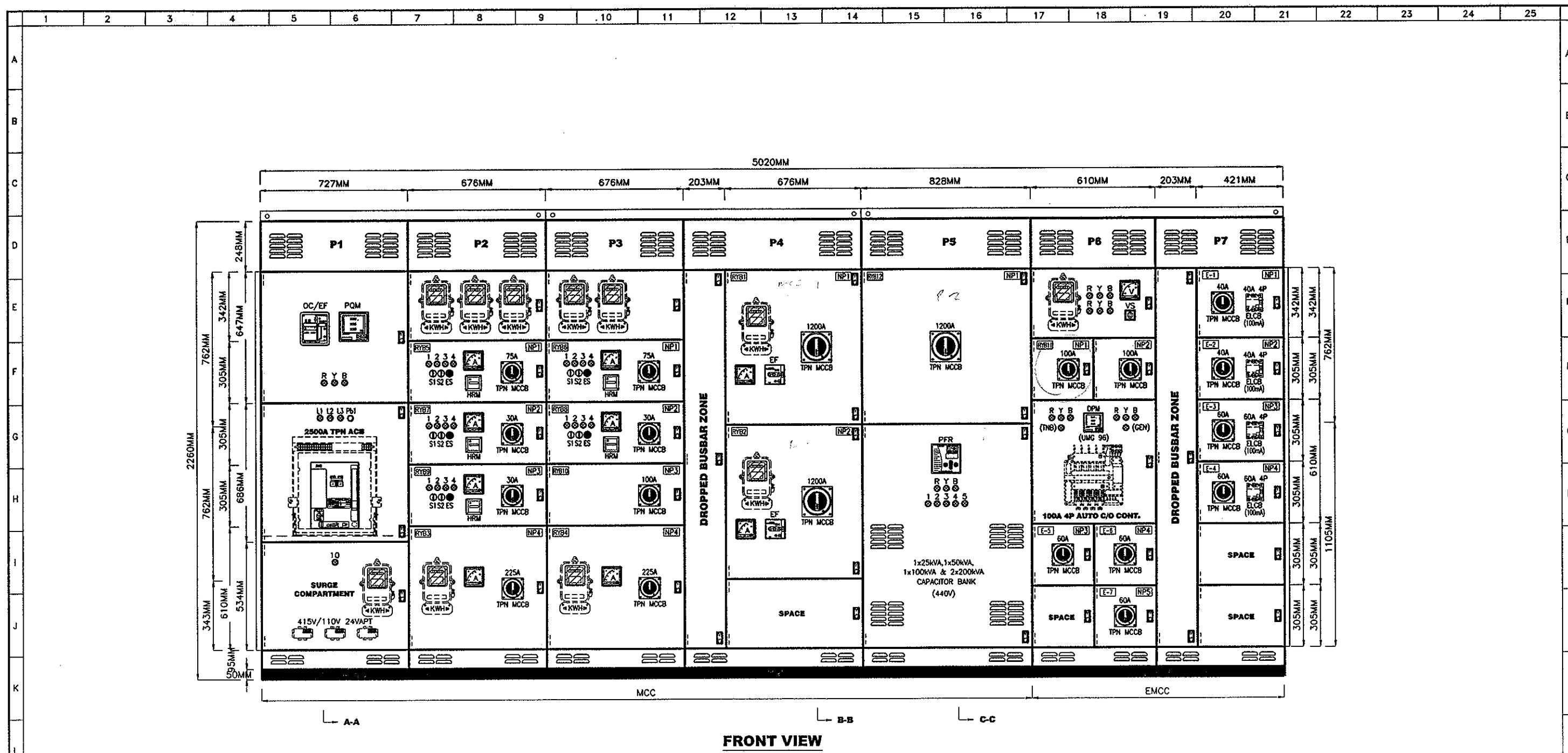


SCHEDULE FOR AMMETERS				
MOTOR RATING (OUTPUT) KW 1500 rpm (415V)	STARTER	ESTIMATED FLC	SCALE FOR AMMETER	THERMAL OVERLOAD RANGE
1.5	DOL	3.4	0-5...25	3 - 5A
2.2	DOL	4.7	0-5...25	4 - 6.2A
3.8	DOL	7.9	0-20...100	6 - 9.2A
15	DOL	28.1	0-50...250	22 - 32A
20	DOL	35.9	0-80...300	30 - 45A
30	DOL	53.6	0-100...500	42 - 63A
90	AT	154.3	0-250...1250	NOT APPLICABLE
225	AT	378	0-600...3000	NOT APPLICABLE
315	AT	496	0-800...4000	NOT APPLICABLE
HEATER RATING KW	SCALE FOR AMMETER			
2	0-5...10			
50	0-100...200			
75	0-150...300			
150	0-300...600			

NOTE :
1.) ALL CURRENT TRANSFORMER FOR AMMETER SHALL BE RATED AT 5A SECONDARY UNLESS SPECIFIED OTHERWISE IN DRAWING.
2.) PRIMARY CURRENT RATING OF CURRENT TRANSFORMER FOR AMMETER SHALL MATCH AMMETER SCALE FOR DIRECT READING.



* ESTIMATED LOAD		CONV. LOAD (KW)		M.D.	
MOTOR OUTPUT	HEATER INPUT	MOTOR OUTPUT	HEATER INPUT	MOTOR OUTPUT	HEATER INPUT
-	-	400	-	380	-
-	-	400	-	380	-
-	-	72	-	65	-
-	-	72	-	65	-
-	-	22	-	18	-
-	-	22	-	-	-
-	-	5.5	-	5	-
-	-	5.5	-	-	-
SUB TOTAL (NON-ESSENTIAL)	-	999	-	913	-
-	-	6.73	-	2.69	-
-	-	22	-	22	-
-	-	22	-	22	-
-	-	2.18	-	0.87	-
SUB TOTAL (ESSENTIAL)	-	52.91	-	47.56	-
TOTAL	-	1052	-	961	-



FRONT VIEW

LEGEND

- | | |
|-----------------------|-----------------------------------------|
| 1 ⊗ - RUN LIGHT (R) | ES ⊗ - EMERGENCY STOP PUSH BUTTON |
| 2 ⊗ - TRIP LIGHT (A) | Pb1 ⊗ - RESET PUSH BUTTON |
| 3 ⊗ - TEST LIGHT (G) | S1 ⊗ - DUTY/OFF/TEST SELECTOR SWITCH |
| 4 ⊗ - READY LIGHT (G) | S2 ⊗ - REMOTE/OFF/ON SELECTOR SWITCH |
| 5 ⊗ - OFF LIGHT (R) | S3 ⊗ - REMOTE/OFF/LOCAL SELECTOR SWITCH |

CONSTRUCTION DETAIL:-

- | | |
|----------------------|------------------------------|
| FRAME/WORK | - 2.3MM SHEET METAL |
| PANEL/COVER | - 2.0MM SHEET METAL |
| COLOUR | - EPOXY POWDER TEXTURE BEIGE |
| | - (FF160/202/CW) |
| FORM OF SEGREGATION | - FORM 3B |
| CABLE ENTRY INCOMING | - BOTTOM |
| CABLE ENTRY OUTGOING | - BOTTOM |

UP **UNITED AUTOMATION SDN. BHD.**
 NO.4, JALAN KINRARA 2,
 KAWASAN PERINDUSTRIAN KINRARA,
 JALAN PUCHONG, 47100 SELANGOR DARUL EHSAN.
 TEL: 03-80756937 FAX: 03-80753792
 E-MAIL: uaprojek@streamyx.com

ELECTRICAL CONSULTANT:

CLIENT: **AIR LIQUIDE MALAYSIA SDN. BHD.**
 LOT 2317 NO.21, JALAN PTB1,
 KAWASAN PERINDUSTRIAN TANGGA BARU,
 MUKIM SUNGAI UDANG, DAERAH MELAKA TENGAH,
 76400, MELAKA.

CONTRACTOR: **P.J. UNION SDN. BHD.**
 NO.2 JALAN SS 25/35,
 TAMAN MAYANG,
 47301 PETALING JAYA.

PROJECT: **FIRST SOLAR TANK FARM KULIM FOR
 M/S AIR LIQUIDE (M) S/B**

TITLE: **MOTOR CONTROL CENTER (MCC)
 - LAYOUT**

DWG. NO.: **UA10050-001-01/08**

DATE: **02-08-2010**

CON. DWG. NO.:

ACAD FILENAME:
MCC C/W EMCC

REV.: **0**

DRAWN: **YEE**

APPROVED:

CHECKED:
LOO

DATE OF ISSUE:
17 AUG 2010

REV.	DATE	DESCRIPTION