

### *Replacing a Seal Kit on a Single Control Kitchen Faucet*

Although Kohler faucets are made with the highest quality, like anything else with moving parts, they may need service from time to time. Kohler faucets are designed for the homeowner to repair. Installing a seal kit (o-rings and bearings) in a single control kitchen faucet is something almost anyone can do!

First turn off the water to your faucet and remove the plug button from the handle. There will be a small screw underneath the plug button.



Loosen the screw to remove the handle. The bonnet will be the next part, looking like a dome with the top cut off. Unscrew the bonnet; it should remove easily by hand, going counterclockwise to expose the valve and mounting nut.

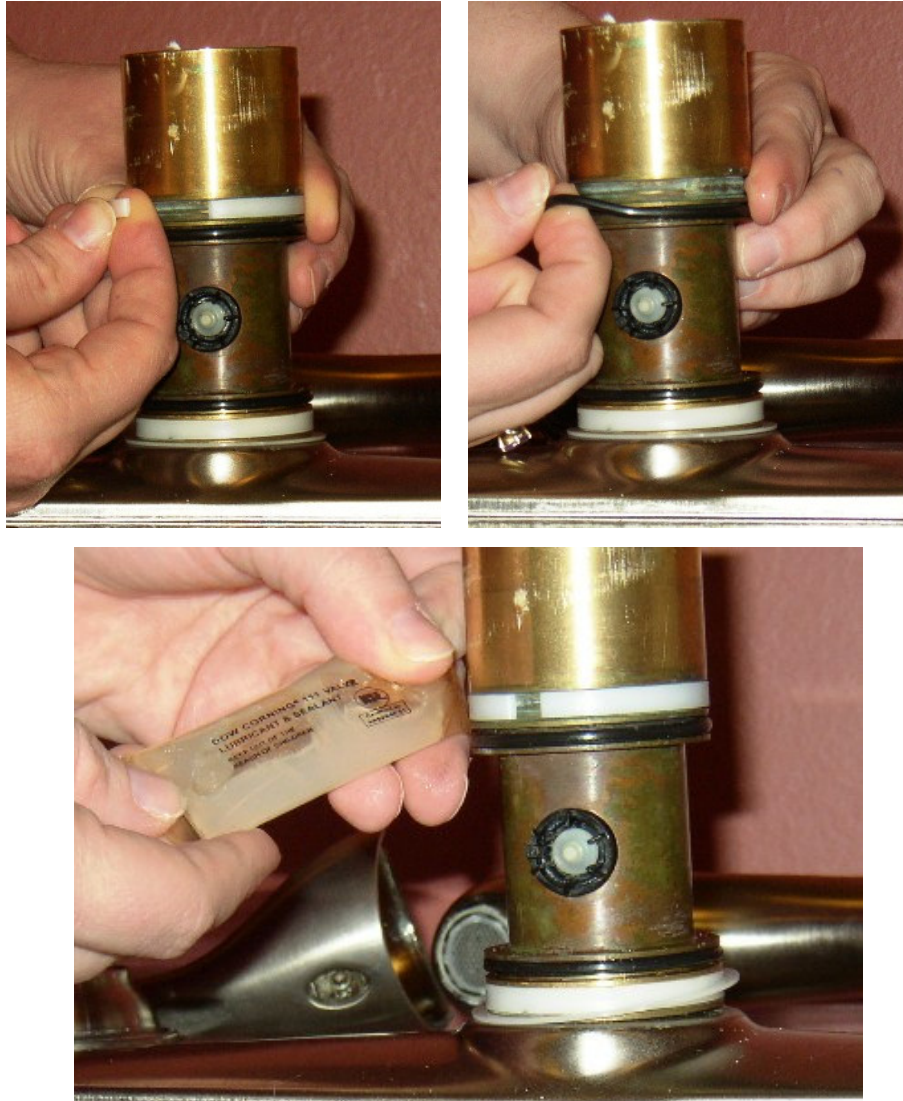
Bonnet on:



Bonnet off:



Firmly grasp the hub and spout and pull the entire assembly up and off the body of the faucet. The o-rings and bearings are found around the body of the faucet. Replace the o-rings and in the same order they appear on your faucet and lubricate generously with the included silicone based lubricant.



Now, you simply slide your spout back onto the body of the faucet and reassemble the remaining pieces.