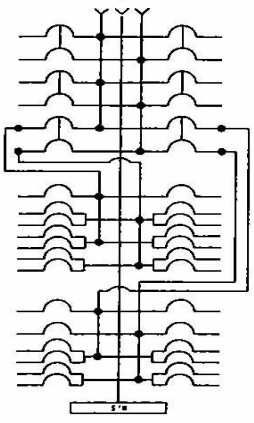


TO ORDER INDOOR ENCLOSURE—SPECIFY CATALOG NUMBERS, FOR INTERIOR AND BOX PLUS TRIM																	
Mains Rating Amperes	Main Section		Lighting Section		INDOOR ENCLOSURE								RAINTIGHT ENCLOSURE				
	Max. 2 Poles		Max. 1 Pole Branch Circuits		List Price Complete Assembly	Box and Interior Only				Trim Only				Complete Assembly			
	Ltg. Main	Branch Cir-cuits	All EQ-P Single	Incl. EQ-T Duals		Box Height,* Inches	Cat. No.	List Price	Ship. Wgt. Lb./Std. Pkg. of 1	Cat. No. Add. Preflx. SU-Surf. FL-Flush	List Price	Ship. Wgt. Lb./Std. Pkg. of 1	Cat. No.	List Price	Ship. Wgt. Lb./Std. Pkg. of 1	Box Height,** Inches	
<b>1 PHASE, 3 WIRE SN</b>																	
<b>120/240 VOLT AC</b>																	
125	1	2	6	12	\$19.20	18	EQ 2X6	\$10.20	14	12B		7	WEQ 2X6	\$30.50	26	19	
125	1	3	8	14	25.60	21	EQ 3X8	16.60	16	16		9	WEQ 3X8	36.50	29	22	
150	1	3	8	14	31.00	21	EQ 3X8A	22.00	16	16		9	WEQ 3X8A	42.00	29	22	
150	1	5	8	14	38.00	21	EQ 5X8A	29.00	17	20A		9	WEQ 5X8A	50.20	29	22	
150	2	4	16	26	44.00	27	EQ 4X16A	35.00	25	28B		11	WEQ 4X16A	60.50	43	28	
200	1	5	8	14	40.70	24	EQ 5X8B	31.70	17	20B		10	WEQ 5X8B	56.00	34	25	
200	1	5	12	14	45.50	24	EQ 5X12B	36.50	19	24B		10	WEQ 5X12B	60.00	35	25	
200	2	4	16	28	49.50	27	EQ 4X16B	40.50	25	28B		11	WEQ 4X16B	66.00	43	28	
200	2	4	24	28	62.00	30	EQ 4X24B	53.00	27	4X24B		12	WEQ 4X24B	82.00	45	31	

\* Indoor boxes are 14 1/4" wide by 4" deep.  
 \*\* Raintight boxes are 14 1/4" wide by 4 1/2" deep.  
 Circuit Breakers—Not included in above prices. See page 63.  
 Lugs—Approved for use with Copper or Aluminum Conductors. See page 68.  
 Knockouts—See diagrams, page 68.  
 Hubs—Not furnished with Raintight Enclosure. See page 68 for data and prices.

**SPLIT BUS—1 Phase, 3 Wire**



EQ 4X16A—150A  
 16—Two Pole and  
 26 Poles Max. Ltg.